
EPSON DOT MATRIX RANGE

9-PIN DOT MATRIX PRINTERS

24-PIN DOT MATRIX PRINTERS



EPSON[®]
EXCEED YOUR VISION

EPSON DOT MATRIX RANGE

Epson is the world's largest manufacturer of dot matrix printers with a product range that offers the ultimate in high speed, low cost, reliable and durable printing across all stationery types. Ideal for drafting, high volume data processing, and multi-part stationery – for which there is simply no alternative – no other technology offers such broad capability from a single machine.

Offering a wider choice than any other manufacturer – and spanning every duty cycle, from light to heavy duty – the Epson dot matrix range enables you to strike exactly the right balance between capability, performance and cost. And built to the standards which have made the Epson brand synonymous with reliability, Epson dot matrix printers are not only competitively priced, but extremely economical to run.



NEW

EPSON LQ-690

- Print speed enhancer: fast printing of bit image data from the Windows® environment
- High reliability at MTBF of 20,000 hours
- High ribbon yield of 10 million characters

EPSON 9-PIN DOT MATRIX PRINTERS

Featuring durable, heavy and medium duty printers for continuous data processing and high speed drafting tasks – while offering competitively priced low cost printers – the Epson 9-pin dot matrix range offers exceptional value.

Outstanding performance combined with high precision alignment and sophisticated paper handling enables this truly comprehensive range of narrow and wide carriage printers to tackle the widest range of high speed printing tasks with supreme accuracy, making them ideal for commercial, industrial and logistic applications – including data processing, invoicing, stock requisitions, cheque runs, label printing etc.

EPSON 24-PIN DOT MATRIX PRINTERS

Offering all the features available across the Epson 9-pin range, but with the addition of scalable fonts and letter quality, for superior print quality, Epson 24-pin printers are ideal for front desk applications in the retail and service industries, and for tasks such as invoice and order printing.

The range is further enhanced with flat-bed printers that enable 24-pin printing to be achieved on less flexible materials and a wide variety of non-standard stationery such as receipts and label printing.

Printer Model	Duty	9-Pin	24-Pin	POS	Instore	Accounting	Listing	Passbook
LX-300+II	Light	■		●●●			●	
LX-1170II	Medium	■		●●	●●		●	
FX-890	High	■		●	●●●	●●●	●●	
FX-2190	High	■			●●●	●●●	●●	
DFX-9000	Heavy	■			●●●	●●●	●●●	
LQ-300+II	Light		■	●●●				
LQ-590	Medium		■	●●	●●●	●●●	●●	
LQ-630	Light		■	●●	●			
LQ-680/680Pro	Medium		■	●●	●●●			
LQ-690	Medium		■	●●	●●●			
LQ-2090	Medium		■		●●●	●●●	●●	
LQ-2180	High		■		●●●	●●●	●●●	
DLQ-3500	Heavy		■		●●●	●●	●●●	
PLQ-20/20M	Heavy		■	●	●			●●●
PLQ-20D/20DM	Heavy		■	●	●			●●●

THE DOT MATRIX PRINTER ADVANTAGES

- Low TCO per print-outs (as low as 20 euro cents/ 100 pages)
- Multi-part capability (up to 1 original + 9 copies)
- Long lasting print-outs (up to 100 years)
- Can work under harsh environments (Hot, cold, dry, humid or dusty environments)
- Less maintenance
- Handles continuous paper (Good for transaction continuity)
- Handles media of varying thickness (Paper, multipart forms, envelopes, card etc)
- Multiple paper paths (Choose paper loading paths that match your workstation environment)
- Handles cut sheets and continuous paper simultaneously

COMPATIBILITY – ESC/P2

ESC/P (Epson Standard Code for Printers) is the defacto standard dot matrix printer control language, worldwide. Adopted in the vast majority of popular software packages, ESC/P enables you to plug straight in – and print. The versatility and quality of Epson impact printing is further extended by ESC/P2 which enables Epson 24-pin printers to achieve scalable fonts and high resolution graphics.

Fully compatible with existing software, ESC/P2 is designed for use with non Windows® operating systems, enabling you to achieve font manipulation without the need for costly on-board processors. If you are working within the Windows® environment you will be able to achieve your printer's maximum speed by using printer resident fonts.

CONNECTIVITY

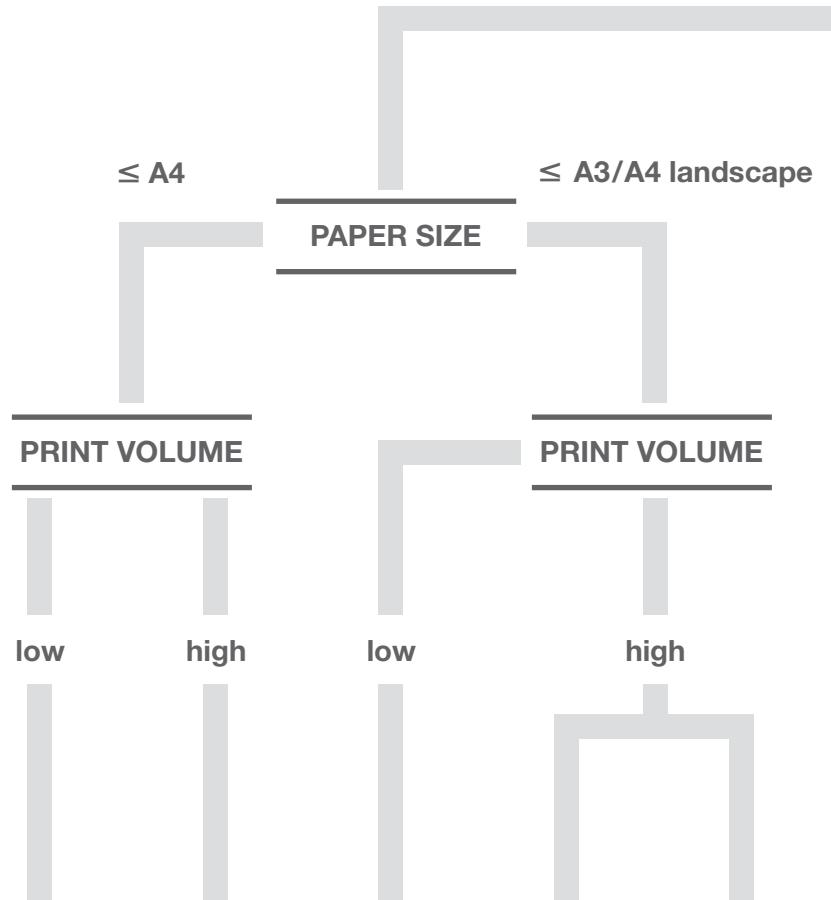
Epson connectivity goes far beyond USB, parallel and serial interfaces. Where Epson impact printers are required to serve either as a shared resource or as a personal printer, we offer Ethernet and Wireless 802.11b. For full details of interfacing options please refer to the options and specifications tables at the back of this brochure.

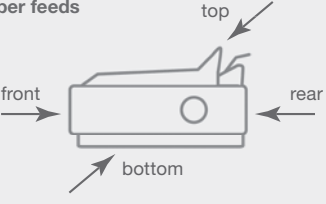
COLOUR PRINTING

Colour printing highlights important information and gives clarity to forms. Epson colour ribbons are ultra tough and produce colourful results without bleed or smudging. An easily installed colour upgrade is available for selected printers. For full details of printing options please refer to the options and specifications tables at the back of this brochure.

EPSON DOT MATRIX PRINTER SELECTOR

9 pin – speed is more important than print quality



	LX-300+II	FX-890	LX-1170II	FX-2190	DFX-9000
Quick comparison					
Speed	●○○○○	●●●●○	●○○○○	●●●●○	●●●●●
Print volumes / durability	●○○○○	●●●●○	●○○○○	●●●●○	●●●●●
Footprint	●○○○○	●●○○○	●●○○○	●●●●○	●●●●●
Quieter printing	●○○○○	●●●●○	●○○○○	●●●●○	●●●●○
Flatbed printer					
Platen gap adjustment	manual	manual	manual	manual	automatic*
Multi copy capability	1+4 parts	1+5 parts	1+4 parts	1+5 parts	1+9 parts
Paper feeds 	Continuous	rear	rear	rear	rear
		bottom	bottom	bottom	bottom
	Cut sheet	top	top	top	
			front (optional)	front (optional)	
Print width	80 columns, 8"	80 columns, 8"	136 columns, 13.6"	136 columns, 13.6"	136 columns, 13.6"
Printer language	Epson / IBM	Epson / IBM / Oki	Epson / IBM	Epson / IBM / Oki	Epson / IBM
Colour printing	optional				

●○○○○ = low ●●●●○ = high

*DFX-9000, LQ-680Pro and DLQ-3500 have automatic platen gap adjustment to ensure optimum settings when changing between different media types with the minimum of user intervention. Automatic platen gap adjustment also allows printing on forms with varying thickness, such as multipart courier forms that also include a label.

24 pin – print quality is as important as speed

PRINT QUALITY

≤ A4

PAPER SIZE

≤ A3/A4 landscape

low

PRINT VOLUME

no

FLATBED

yes

FLATBED

A4 landscape

no

yes

high

A3

LQ-300+II	LQ-630	LQ-590	LQ-2090	LQ-2180	LQ-680/ 680Pro	LQ-690	DLQ-3500
●○○○○	●○○○○	●●○○○	●●○○○	●●●○○	●●○○○	●●○○○	●●●○○
●○○○○	●○○○○	●●●○○	●●●○○	●●●○○	●●●○○	●●●○○	●●●●●
●○○○○	●○○○○	●●○○○	●●●○○	●●●●●	●●●○○	●●●○○	●●●●●
●○○○○	●●●○○	●○○○○	●●○○○	●●●○○	●●●○○	●●●○○	●●●●●
	flatbed				flatbed	flatbed	flatbed
manual	manual	manual	manual	manual	manual (LQ-680) autom.* (LQ-680 Pro)	manual	automatic*
1+3 parts	1+4 parts	1+4 parts	1+4 parts	1+5 parts	1+5 parts	1+6 parts	1+7 parts
rear	rear	rear	rear	rear	rear	rear	rear
bottom		bottom	bottom	bottom			
top	front	top	top	top	front	front	front
		front	front	front			
80 columns, 8"	80 columns, 8"	80 columns, 8"	136 columns, 13.6"	136 columns, 13.6"	106 columns, 10.6"	106 columns, 10.6"	136 columns, 13.6"
Epson / IBM	Epson / IBM	Epson / IBM	Epson / IBM	Epson / IBM	Epson / IBM	Epson / IBM	Epson / IBM
optional							standard

EPSON DOT MATRIX PRINTER COMPARISON

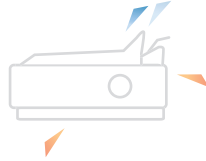
	Model	Order code	Character per line	Applications	Print speed in CPS (characters per second)	CPS @ 10 characters per inch	CPS @ 12 characters per inch	Print volume	Multipart copy capability	Dimensions (WxDxH) mm
9-pin	 LX-300+II	C11C640041 (220 V) C11C640051 (240 V)	80	Office application Front desk	High speed draft: Draft: Quality:	300 225 56	337 270 67	Low	1+4	366 x 275 x 159
	 LX-1170II	C11C641001 (220 V) C11C641002 (240 V)	136	Listing Accounting Invoicing	High speed draft: Draft: Quality:	300 225 56	337 270 67	Low	1+4	546 x 275 x 163
	 FX-890	C11C524025 (220 V) C11C524026 (240 V)	80	Listing Accounting Invoicing	Ultra high speed draft: Draft: Quality:	566 419 104.6	680 503 125.9	Medium	1+5	414 x 350 x 167.5
	 FX-2190	C11C526022 (220 V) C11C526023 (240 V)	136	Listing Accounting Invoicing	Ultra high speed draft: Draft: Quality:	566 419 104.6	680 503 125.9	Medium	1+5	589 x 350 x 167.5
	 DFX-9000	C11C605011BZ (220 V) C11C605011DA (240 V)	136	High speed high volume printing	High speed draft: Draft: Quality:	1550 1320 330	1450 1320 330	High	1+9	700 x 378 x 363
24-pin	 LQ-300+II	C11C638001 (220 V) C11C638002 (240 V)	80	Office application Front desk	High speed draft: Draft: Quality:	300 225 75	n/a 270 90	Low	1+3	366 x 275 x 159
	 LQ-590	C11C558022 (220 V) C11C558022A1 (240 V)	80	Office application Listing	High speed draft: Draft: Quality:	440 330 110	529 396 132	Medium	1+4	473.5 x 374.5 x 171.5
	 LQ-630	C11C480019 (220 V) C11C480019A1 (240 V)	80	Office application Flat bed printing	High speed draft: Draft: Quality:	300 225 79	360 270 94	Low	1+4	386 x 306 x 185
	 LQ-680	C11C376025 (220 V) C11C376026 (240 V)	106	Flat bed printing	High speed draft: Draft: Quality:	413 310 103	n/a 372 124	Medium	1+5	497 x 387 x 230
	 LQ-680Pro	C11C376125 (220 V) C11C376125A1 (240 V)	106	Flat bed printing, paper with varying thickness (auto platten gap adjustment)	High speed draft: Draft: Quality:	413 310 103	n/a 372 124	Medium	1+5	497 x 387 x 230
	 LQ-690	C11CA13041 (220 V) C11CA13051 (240 V)	106	Office application Flat bed application	High speed draft: Draft: Quality:	440 330 110	529 396 132	Medium	1+6	480 x 370 x 210
	 LQ-2090	C11C559012 (220 V) C11C559012A1 (240 V)	136	Listing Accounting Invoicing	High speed draft: Draft: Quality:	440 330 110	529 396 132	Medium	1+4	612.5 x 374.5 x 171.5
	 LQ-2180	C11C272152 (220 V) C11C272153 (240 V)	136	High speed listing	High speed draft: Draft: Quality:	480 360 120	n/a 431 143	Medium	1+5	639 x 402 x 268
	 DLQ-3500	C11C396085 (220 V) C11C396086 (240 V)	136	High speed listing Flat bed printing, paper with varying thickness (auto platten gap adjustment)	High speed draft: Draft: Quality:	550 495 165	n/a 594 198	High	1+7	660 x 432 x 276
	 PLQ-20/ PLQ-20M	PLQ-20: C11C560171 (220 V) C11C560021DA (240 V) PLQ-20M: C11C560181 (220 V) C11C560031DA (240 V)	94	Passbook, cheques, front desk applications	High speed draft: Draft: Quality:	480 360 120	576 432 144	Medium	1+6	384 x 280 x 203
	 PLQ-20D/ PLQ-20DM	PLQ-20D: C11C560361 (220 V) C11C560311A1 (240 V) PLQ-20DM: C11C560371 (220 V) C11C560341A1 (240 V)	94	Passbook, cheques, front desk applications	High speed draft: Draft: Quality:	480 360 120	576 432 144	Medium	1+6	384 x 280 x 203

● standard ○ optional

	<i>Model</i>	<i>Order code</i>	<i>Interfaces</i>	<i>Emulations</i>	<i>Push tractor</i>	<i>Cut sheet</i>	<i>Pull tractor</i>	<i>Roll paper</i>	<i>Optional cut sheet feeders</i>	<i>Warranty</i>
9-pin		LX-300+II C11C640041 (220 V) C11C640051 (240 V)	USB, parallel, serial, optional: 802.11b/g	ESC/P IBM 2380+	●	●	●	○	50 sheet	1 year replacement or repair optional extension to 3 years
		LX-1170II C11C641001 (220 V) C11C641002 (240 V)	USB, parallel, serial, optional: 802.11b/g	ESC/P IBM 2381+	●	●	●	○	50 sheet	1 year replacement or repair optional extension to 3 years
		FX-890 C11C524025 (220 V) C11C524026 (240 V)	USB, parallel, optional: network, 802.11b/g, serial	ESC/P IBM PPDS	●	●	●	○	50 + 150 sheet *1	1 year replacement or repair optional extension to 3 years
		FX-2190 C11C526022 (220 V) C11C526023 (240 V)	USB, parallel, optional: network, 802.11b/g, serial	ESC/P IBM PPDS	●	●	●	○	50 + 150 sheet *1	1 year replacement or repair optional extension to 3 years
		DFX-9000 C11C605011BZ (220 V) C11C605011DA (240 V)	USB, parallel, serial, optional: network, 802.11b/g	ESC/P IBM PPDS	●			○		1 year on-site optional extension to 3 years
24-pin		LQ-300+II C11C638001 (220 V) C11C638002 (240 V)	USB, parallel, serial, optional: 802.11b/g	ESC/P2 IBM 2390+	●	●	●	○	50 sheet	1 year replacement or repair optional extension to 3 years
		LQ-590 C11C558022 (220 V) C11C558022A1 (240 V)	USB, parallel, optional: network, 802.11b/g, serial	ESC/P2 IBM PPDS	●	●	●	○	50 + 150 sheet *1	1 year replacement or repair optional extension to 3 years
		LQ-630 C11C480019 (220 V) C11C480019A1 (240 V)	USB, parallel, optional: 802.11b/g	ESC/P2 IBM PPDS	●	●				1 year replacement or repair optional extension to 3 years
		LQ-680 C11C376025 (220 V) C11C376026 (240 V)	Parallel, optional: network, serial	ESC/P2 IBM 2390+	●	●		○	50 + 150 sheet *2	1 year replacement or repair optional extension to 3 years
		LQ-680Pro C11C376125 (220 V) C11C376125A1 (240 V)	Parallel, optional: network, serial	ESC/P2 IBM 2390+	●	●		○	50 + 150 sheet *2	1 year replacement or repair optional extension to 3 years
		LQ-690 C11CA13041 (220 V) C11CA13051 (240 V)	USB, parallel, optional: 802.11b/g	ESC/P2 IBM PPDS	●	●		○		1 year replacement or repair optional extension to 3 years
		LQ-2090 C11C559012 (220 V) C11C559012A1 (240 V)	USB, parallel, optional: network, 802.11b/g, serial	ESC/P2 IBM PPDS	●	●	●	○	50 + 150 sheet *1	1 year replacement or repair optional extension to 3 years
		LQ-2180 C11C272152 (220 V) C11C272153 (240 V)	Parallel, optional: network, serial	ESC/P2 IBM 2391+	●	●	●	○	50 + 150 sheet *1	1 year replacement or repair optional extension to 3 years
		DLQ-3500 C11C396085 (220 V) C11C396086 (240 V)	USB, parallel, optional: network, 802.11b/g, serial	ESC/P2 IBM PPDS	●	●			250 sheet	1 year on-site optional extension to 3 years
		PLQ-20/ 20M PLQ-20: C11C560171 (220 V) C11C560021DA (240 V) PLQ-20M: C11C560181 (220 V) C11C560031DA (240 V)	USB, parallel, serial, optional: 802.11b/g	ESC/P2 IBM PPDS PR2, WNI4915		●		○		1 year replacement or repair optional extension to 3 years
		PLQ-20D/ 20DM PLQ-20D: C11C560361 (220 V) C11C560311A1 (240 V) PLQ-20DM: C11C560371 (220 V) C11C560341A1 (240 V)	USB, 2x serial, optional: 802.11b/g	ESC/P2 IBM PPDS PR2, WNI4915		●		○		1 year replacement or repair optional extension to 3 years

*1) 50 sheet or 100 sheet or both can be fitted at the same time *2) 150 sheet must be fitted before 50 sheet can be fitted

EPSON LX-300+II



Because of its compact dimensions, the Epson LX-300+II is not only the ideal 9-pin printer for front and back office applications where space is limited, it's also a low cost solution for measurement and control systems. With auto switching USB, serial and parallel interfaces, the LX-300+II provides flexible standalone connectivity.

9-PIN DOT MATRIX PRINTER

Key features

- Compact 9-pin narrow carriage printer
- Up to 337 characters per second (12 cpi)
- Copy capability of 1 original + 4 copies
- Versatile top, bottom and rear paper paths
- 8 built-in bar code fonts
- USB, parallel and serial interfaces

Options

- 50 sheet cut sheet feeder
- Roll paper holder
- Colour upgrade kit
- Push/pull tractor unit
- Wireless network interface

Order codes for main units are on page 6–7, for options and consumables on page 18–20.

EPSON LX-1170II



The Epson LX-1170II is the ideal 9-pin printer for light workloads. The copy capability of one original plus four copies makes it suitable for a variety of environments including data reporting (e.g. telephone statistics and call logs, helpdesk and computer system reporting), listings, shipping documents and measurement and control systems.

9-PIN DOT MATRIX PRINTER

Key features

- Wide carriage 9-pin printer
- Up to 337 characters per second (12 cpi)
- Copy capability of 1 original + 4 copies
- Versatile top, bottom and rear paper paths
- 8 built-in bar code fonts
- USB, parallel and serial interfaces

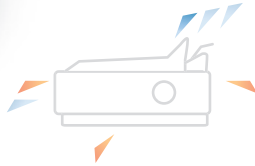
Options

- 50 sheet cut sheet feeder
- Roll paper holder
- Push/pull tractor unit
- Wireless network interface

Order codes for main units are on page 6–7, for options and consumables on page 18–20.

Standard Optional Standard Optional
Continuous   Cut Sheet  

EPSON FX-890



This narrow carriage printer combines high speed with the highest reliability. A mean volume between failure of 52 million lines makes it ideal for medium and large print volumes. Paper can be fed from front, top, rear or bottom and an optional additional push/pull tractor can store a second continuous form – perfect for warehouses, wholesalers, freight forwarders and finance departments.

9-PIN DOT MATRIX PRINTER

Key features

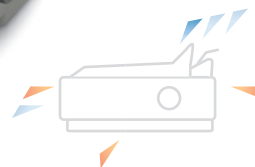
- Fastest printer in its class up to 680 cps (12 cpi)
- Copy capability of 1 original + 5 copies
- Extremely robust printer with an MTBF of 20,000 power on hours
- Reliable print head life of 400 mill. characters
- Long lasting ribbon of 7.5 mill. characters
- Versatile front, top, bottom and rear paper paths
- USB and parallel interfaces

Options

- 150 or 50 sheet cut sheet feeders
- Front sheet guide
- Front paper guide
- Additional push/pull tractor unit
- Roll paper holder
- Wired and wireless network interfaces, serial interface

Order codes for main units are on page 6–7, for options and consumables on page 18–20.

EPSON FX-2190



This wide carriage printer combines high speed printing with outstanding reliability. A mean volume between failure of 52 million lines makes this printer suitable for medium and large print volumes. The paper can be fed from the front, top, rear or bottom and an optional additional push/pull tractor unit can store a second continuous form, which is ideal for commercial and industrial environments. Also available as network version FX-2190N.

9-PIN DOT MATRIX PRINTER

Key features

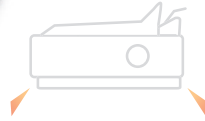
- Fastest printer in its class up to 680 cps (12 cpi)
- Copy capability of 1 original + 5 copies
- Extremely robust printer with an MTBF of 20,000 power on hours
- Reliable print head life of 400 mill. characters
- Long lasting ribbon of 12 mill. characters
- Versatile front, top, bottom and rear paper paths
- USB and parallel interfaces

Options

- 150 sheet cut sheet feeder
- 50 sheet cut sheet feeder
- Front sheet guide
- Front paper guide
- Additional push/pull tractor unit
- Roll paper holder
- Wired and wireless network interfaces, serial interface

Order codes for main units are on page 6–7, for options and consumables on page 18–20.

EPSON DFX-9000



The Epson DFX-9000 is a high print volume printer providing an unprecedented level of speed and reliability for the most demanding business. Its advanced paper handling accommodates a variety of paper types while the standard front and rear push tractors can be switched easily between different types of continuous paper. An optional perforation cutter provides paper finishing capabilities. Also available as network version DFX-9000N.

9-PIN DOT MATRIX PRINTER

Key features

- Extremely fast and reliable 4 x 9 pin wide carriage printer
- Extremely robust printer with an MVBF of 133 mill. characters
- Fast speed up to 1,550 cps
- Copy capability of 1 original + 9 copies
- Automatic platen gap adjustment
- USB, parallel and serial interfaces

Options

- Pull tractor unit
- Perforation cutter
- Wired and wireless network interfaces
- Printer cabinet (Order code 7102677)

Order codes for main units are on page 6–7, for options and consumables on page 18–20.

EPSON LQ-300+II



The compact Epson LQ-300+II is the ideal printer for front and back office applications where space may be limited as well as for measurement and control systems. The copy capability of one original plus three copies makes the 24-pin printer suitable for POS applications where reliable light duty printing is required.

24-PIN DOT MATRIX PRINTER

Key features

- Compact 24-pin narrow carriage printer
- Up to 300 characters per second (10 cpi)
- Copy capability of 1 original + 3 copies
- Versatile top, bottom and rear paper paths
- 8 built-in bar code fonts
- USB, parallel and serial interfaces

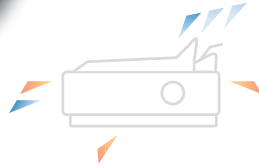
Options

- 50 sheet cut sheet feeder
- Roll paper holder
- Colour upgrade kit
- Additional push/pull tractor unit
- Wireless network interface

Order codes for main units are on page 6–7, for options and consumables on page 18–20.

Standard Optional Standard Optional
Continuous   Cut Sheet  

EPSON LQ-590



With a mean volume between failure of 40 million lines and a high print speed of 529 cps this extremely robust printer is ideal for medium and large print volumes. Flexible paper management allows insertion from the front, top, rear, and bottom, while a front sheet guide enables front feeding of even small paper types. Typical applications are labels, barcodes and point of sale invoice printing.

24-PIN DOT MATRIX PRINTER

Key features

- Very high print speed of up to 529 cps (12 cpi)
- Copy capability of 1 original + 4 copies
- Extremely robust printer with an MTBF of 20,000 POH
- Reliable print head life of 400 mill. strokes/wire
- Long lasting ribbon of 5 mill. characters
- Versatile front, top, bottom and rear paper paths
- Sound reduction down to 49 dB(A) in low-noise mode

Options

- 150 sheet cut sheet feeder
- 50 sheet cut sheet feeder
- Front paper guide
- Additional push/pull tractor unit
- Roll paper holder
- Wired and wireless network interfaces, serial interface

Order codes for main units are on page 6–7, for options and consumables on page 18–20.

EPSON LQ-630



With a small footprint (39 cm x 31 cm) footprint, a column width of 80 characters, and print speed of up to 360 cps, this printer is ideal for environments with restricted space such as retail stores, doctors surgeries, ticket offices and industrial, trade and service companies.

24-PIN DOT MATRIX PRINTER

Key features

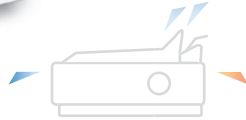
- Compact and robust design
- Copy capability of 1 original + 4 copies
- Print at up to 360 cps (12 cpi)
- Also prints on small cut sheet paper (9 cm x 7 cm)
- Flatbed technology for ergonomic front paper feed
- USB and parallel interfaces

Options

- Wireless network interface

Order codes for main units are on page 6–7, for options and consumables on page 18–20.

EPSON LQ-680/LQ-680Pro



These highly durable printers have a straight, flat paper path for ultra reliable flatbed printing. The Epson LQ-680Pro also includes automatic paper thickness adjustment for optimised print quality and optimised paper feeding – ideal for frequent changing between different paper types. It handles paper with varying thickness (e.g. overlapping forms and labels), and has simple push button paper source selection (e.g. between cut sheet and continuous paper).

EPSON LQ-690



The Epson LQ-690 offers the best in dot matrix performance where it matters most: speed, reliability, ribbon yield and ease of use. The LQ-690 is also versatile, handling cut sheets, continuous paper, labels, envelopes and cards. The new innovative Print Speed Enhancer feature allows fast printing of bit image data from Windows®.

Continuous Standard Optional Cut Sheet Standard Optional

24-PIN DOT MATRIX PRINTER

Key features

- Reliable and durable 24-pin flat bed printer
- 106 columns printing width
- Copy capability of 1 original + 5 copies
- Prints up to 413 characters per second (10 cpi)
- Parallel interface
- Automatic paper thickness adjustment¹
- Push button paper source section¹

Options

- 150 sheet cut sheet feeder
- 50 sheet cut sheet feeder²
- Roll paper holder
- Wired network and serial interfaces

1) Epson LQ-680Pro

2) 150 sheet cut sheet feeder must be fitted first

Order codes for main units are on page 6–7, for options and consumables on page 18–20.

24-PIN DOT MATRIX PRINTER

Key features

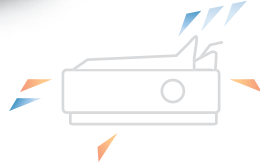
- 24 pin, 106 column, medium duty flatbed printer
- Prints up to 529 cps (12 cpi)
- Print Speed Enhancer: Fast printing of bit image data from Windows®
- Highly reliable with an MTBF of 20,000 hours
- High 10 million character ribbon yield
- High memory buffer of 128 Kbytes
- Copy capability of 1 original + 6 copies
- USB and parallel interfaces

Options

- Roll paper holder
- Wireless network interface

Order codes for main units are on page 6–7, for options and consumables on page 18–20.

EPSON LQ-2090



An extremely robust printer with a mean volume between failure of 40 million lines. Its high print speed of 529 cps makes it an ideal solution for medium and large print volumes. The Epson LQ-2090 impresses with flexible paper management which allows paper insertion from the front, top, rear, and bottom. A front paper guide makes it easy to insert even small sheets from the front.

24-PIN DOT MATRIX PRINTER

Key features

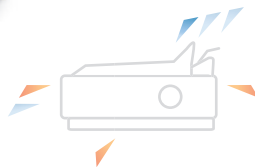
- Very high print speed of up to 529 cps (12 cpi)
- Copy capability of 1 original + 4 copies
- Extremely robust printer with a MTBF of 20,000 POH
- Reliable print head life of 400 mill. strokes/wire
- Long lasting ribbon of 8 mill. characters
- Versatile front, top, bottom and rear paper paths
- Sound reduction down to 50 dB(A) in low-noise mode

Options

- 150 sheet cut sheet feeder
- 50 sheet cut sheet feeder
- Front sheet guide
- Additional push/pull tractor unit
- Roll paper holder
- Wired and wireless network interfaces, serial interface

Order codes for main units are on page 6–7, for options and consumables on page 18–20.

EPSON LQ-2180



This fast, flexible and very reliable printing solution is ideal for high volume applications. A high speed draft mode of up to 480 cps ensures maximum productivity, and two tractor units means you can load two paper types at the same time, ready for use. The LQ-2180 has the ability to handle up to 6-part forms and the choice of top, bottom front and rear paper paths.

24-PIN DOT MATRIX PRINTER

Key features

- Robust and durable 24-pin wide carriage printer
- Very high print speed up to 480 cps (10 cpi)
- Copy capability of 1 original + 5 copies
- Two tractor units as standard
- Versatile front, top, bottom and rear paper paths
- Parallel interface

Options

- 150 sheet cut sheet feeder
- 50 sheet cut sheet feeder¹⁾
- Additional push/pull tractor unit
- Roll paper holder
- Wired network, serial interfaces

¹⁾ 150 sheet cut sheet feeder must be fitted first

Order codes for main units are on page 6–7, for options and consumables on page 18–20.

EPSON DLQ-3500



This printer offers ultra reliable high speed printing. An ability to print on 8-part stationery is especially useful for multiple copy forms, while up to three media paths provide versatile paper handling – front sheet feed with auto loading, rear tractor feed with paper park, and an optional automatic cut sheet feeder. Supplied with both black and colour fabric ribbons.

EPSON PLQ-20/PLQ-20M EPSON PLQ-20D/PLQ-20DM



The Epson PLQ-20, Epson's passbook printer is ideal for all front desks applications such as banking, public administrations, and all booklet or thick media high speed good quality printing requirement. With its tiny footprint, automatic sheet alignment and print head adjustment it's the perfect solution for your flatbed printing needs.

Continuous ▶ ▶ Standard ▶ ▶ Optional ▶ ▶ Cut Sheet

24-PIN DOT MATRIX PRINTER

Key features

- Wide carriage 24-pin flat-bed printer
- Very fast print speed of up to 550 cps (10 cpi)
- Copy capability of 1 original + 7 copies
- Push button paper source selection
- Automatic paper thickness adjustment
- Colour printing
- USB and parallel interfaces

Options

- 250 sheet cut sheet feeder
- Automatic sheet alignment unit
- Wired and wireless network interfaces, serial interface

Order codes for main units are on page 6–7, for options and consumables on page 18–20.

24-PIN DOT MATRIX PRINTER

Key features

- Neat, compact and robust design
- Automatic sheet alignment and thickness adjustment
- High print speed of up to 480 cps
- Quiet 24-pin document or passbook printer
- Copy capability of 1 original + 6 copies
- Flatbed technology for ergonomic front paper feed
- Olivetti PR2, Epson ESC/P2, Wincor 4915, IBM PPDS and IBM 4722 FP emulations
- Software tool for remote firmware upgrade, configuration and information retrieval
- PLQ-20: basic model
- PLQ-20M: with MSRW
- PLQ-20D: with dual serial IF
- PLQ-20DM: with dual serial IF + MSRW

Options

- Space saving kit (includes a top paper tray and a rear paper guide)
- Wireless network interface

Order codes for main units are on page 6–7, for options and consumables on page 18–20.

SPECIFICATIONS EPSON 9-PIN

	LX-300+II	LX-1170II	FX-890	FX-2190	DFX-9000
CARRIAGE WIDTH IN COLUMNS	80	136	80	136	136
PRINT SPEEDS	10 cpi 12 cpi	10 cpi 12 cpi	10 cpi 12 cpi	10 cpi 12 cpi	10 cpi 12 cpi
Ultra high speed draft			566 680	566 680	
High speed draft	300 337	300 337	559 627	559 627	1550 1450
Draft	225 270	225 270	419 503	419 503	1320 1320
Near letter quality	56 67	56 67	104.6 125.9	104.6 125.9	330 330
EMULATIONS					
Epson	ESC/P	ESC/P	ESC/P	ESC/P	ESC/P
IBM / OKI	2380 Plus	2381 Plus	ProPrinter DS / ML	ProPrinter DS / ML	2381 Plus / PPDS
PAPER HANDLING FEATURES					
Auto paper loading	■	■	■	■	■
Auto and manual tear off position	■	■	■	■	■
Paper parking – continuous stationery	■	■	■	■	■
Micro feed	■	■	■	■	■
Automatic platen gap adjustment					■
CUT SHEET STATIONERY					
Single sheet, paper, labels or envelopes	■	■	■	■	
Multi-part forms (original + copies)	1+4	1+4	1+5	1+5	
Front in top out			□	□	
Top in top out	■	■	■	■	
50 sheet cut sheet feeder	□	□	□	□	
150 sheet cut sheet feeder			□	□	
Combined 50/150 sheet cut sheet feeders			□	□	
Front paper guide			□ *5	□ *5	
Front sheet guide			□ *6	□ *6	
ROLL PAPER	□	□	□	□	
CONTINUOUS STATIONERY					
Single sheet or labels	■	■	■	■	■
Multi-part (original + copies)	1+4	1+4	1+5 *8	1+5 *8	1+9 front 1+6 rear
Sheets with varying thickness					■
Multipart with overlap					■
Rear in top out – push feed	■	■	■	■	■
Rear in top out – pull feed	■	■	■	■	□
Rear in top out – push and pull feed	□ *1	□ *1	□ *1	□ *1	□
Front in top out – push feed			■	■	■
Front in top out – pull feed			■	■	□
Front in top out – push and pull feed			□ *1	□ *1	□
Bottom in top out – pull feed	■	■	■	■	
Two stationery types loaded at once			□ *1	□ *1	■
Buffer	64 KB	64 KB	128 KB	128 KB	128 KB
ACOUSTIC NOISE LEVEL	49 dB(A)	49 dB(A)	55 dB(A)	55 dB(A)	58 dB(A)
COLOUR PRINTING	□				
FONTS					
Epson Draft	■	■	■	■	■
Epson Roman	■	■	■	■	■
Epson Sans Serif	■	■	■	■	■
BARCODE FONTS					
Code 128	■	■	■	■	■
Code 39	■	■	■	■	■
EAN-13	■	■	■	■	■
EAN-8	■	■	■	■	■
Interleave 2 of 5	■	■	■	■	■
PostNet	■	■	■	■	■
UPC-A	■	■	■	■	■
UPC-E	■	■	■	■	■
INTERFACES⁹⁾					
USB	■	■	■	■	■
Parallel	■	■	■	■	■
Serial	■	■	□	□	■
Network print server			□	□	□
802.11b/g wireless	□	□	□	□	□
Type B internal interface slot			■	■	■
DIMENSIONS IN MILLIMETRES					
Width	366 mm	546 mm	414 mm	589 mm	700 mm
Depth	275 mm	275 mm	350 mm	350 mm	378 mm
Height	159 mm	163 mm	167.5 mm	167.5 mm	363 mm
WEIGHT	4.4 kg	6.3 kg	7.2 kg	9.4 kg	34 kg
MTBF (POWER ON HOURS)	6,000	6,000	20,000	20,000	20,000
PRINT HEAD LIFE (MILLION STROKES PER WIRE)					
Black	400 m	400 m	400 m	400 m	400 m
Colour	100 m		characters	characters	characters
RIBBON LIFE (IN MILLION CHARACTERS)					
BLACK RIBBON	3 m	3 m	7.5 m	12 m	15 m
COLOUR RIBBON					
Black	1 m				
Cyan	0.7 m				
Magenta	0.7 m				
Yellow	0.5 m				

*1) requires additional convertible tractor unit option
 *2) requires two additional convertible tractor unit options
 *3) 150 sheet cut sheet feeder must be fitted first
 *4) front feed only
 *5) can be used in conjunction with front continuous paper feeding

*6) cannot be used in conjunction with front continuous paper feeding
 *7) LQ-680Pro only
 *8) Multipart 1+6 copies when using pull feed
 *9) Not available in all countries. Please contact your local Epson representative

■ = Standard
 □ = Optional
 S = Scalable from 2 to 32 point in 2 point steps

SPECIFICATIONS EPSON 24-PIN

	LQ-300+II	LQ-590	LQ-630	LQ-680/Pro	LQ-690
CARRIAGE WIDTH IN COLUMNS	80	80	80	106	106
PRINT SPEEDS	10 cpi 12 cpi	10 cpi 12 cpi	10 cpi 12 cpi	10 cpi 12 cpi	10 cpi 12 cpi
High speed draft	300 n/a	440 529	300 360	413 n/a	440 529
Draft	225 270	330 396	225 270	310 372	330 396
Letter quality	75 90	110 132	79 94	103 124	110 132
EMULATIONS					
Epson	ESC/P2	ESC/P2	ESC/P2	ESC/P2	ESC/P2
IBM / OLIVETTI	IBMX24E 2390 Plus	IBM PPDS	IBM PPDS	2390 Plus	IBM PPDS
PAPER HANDLING FEATURES					
Auto paper loading	■	■	■	■	■
Auto and manual tear off position	■	■	■	■	■
Paper parking – continuous stationery	■	■	■	■	■
Micro feed	■	■	■	■	■
Automatic platen gap adjustment				■ *7	
CUT SHEET STATIONERY					
Single sheet, paper, labels or envelopes	■	■	■	■	■
Multi-part forms (original + copies)	1+3	□ 1+4 *4	1+4	1+5	1+6
Sheets with varying thickness				■ *7	
Multipart with overlap				■ *7	
Front in front out			■	■	■
Front in rear out					
Front in top out		■			
Top in top out	■	■			
50 sheet cut sheet feeder	□	□		□ *3	
150 sheet cut sheet feeder		□		□	
250 sheet cut sheet feeder					
Combined 50/150 sheet cut sheet feeders				□	
Front paper guide		■ *5			
Front sheet guide		□ *6	■	■	■
Automatic sheet alignment unit					
ROLL PAPER	□	□		□	■
CONTINUOUS STATIONERY					
Single sheet or labels	■	■	■	■	■
Multi-part (original + copies)	1+3	1+4	1+4	1+5	1+6
Sheets with varying thickness				■ *7	
Multipart with overlap				■ *7	
Rear in front out – push feed			■	■	■
Rear in top out – push feed	■	■			
Rear in top out – pull feed	■	■			
Rear in top out – push and pull feed	□ *1	□ *1			
Front in top out – push feed	■	■			
Front in top out – pull feed	■	■			
Front in top out – push and pull feed		□ *1			
Bottom in top out – pull feed	■	■			
Two stationery types loaded at once		□ *1			
BUFFER	64 KB	128 KB	32 KB	64 KB	128 KB
ACOUSTIC NOISE LEVEL	49 dB(A)	49 dB(A)	57 dB(A)	55 dB(A)	57 dB(A)
COLOUR PRINTING	□				
FONTS					
Epson Draft	■	■	■	■	■
Epson Courier	■	■	■	■	■
Epson OCR-B	■	■	■	■	■
Epson Orator	■	■	■	■	■
Epson Orator-S	■	■	■	■	■
Epson Prestige	■	■	■	■	■
Epson Roman	■ S	■ S	■ S	■ S	■ S
Epson Roman T	■ S	■ S	■ S	■ S	■ S
Epson Sans Serif	■ S	■ S	■ S	■ S	■ S
Epson Sans Serif H	■ S	■ S	■ S	■ S	■ S
Epson Script	■	■	■	■	■
Epson Script C	■	■	■	■	■
BARCODE FONTS					
Code 128	■	■	■	■	■
Code 39	■	■	■	■	■
EAN-13	■	■	■	■	■
EAN-8	■	■	■	■	■
Interleave 2 of 5	■	■	■	■	■
PostNet	■	■	■	■	■
UPC-A	■	■	■	■	■
UPC-E	■	■	■	■	■
INTERFACES⁹					
USB	■	■	■	■	■
Parallel	■	■	■	■	■
Serial	■	□		□	
Network print server		□		□	
802.11b/g wireless	□	□	□		□
Type B space		■		■	
DIMENSIONS IN MILLIMETRES					
Width	366 mm	437.5 mm	386 mm	497 mm	480 mm
Depth	275 mm	374.5 mm	306 mm	387 mm	370 mm
Height	159 mm	171.5 mm	185 mm	230 mm	210 mm
WEIGHT	4.4 kg	7.1 kg	3.5 kg	9.4 kg	6.8 kg
MTBF (POWER ON HOURS)	6,000	20,000	6,000	10,000	20,000
PRINT HEAD LIFE (MILLION STROKES PER WIRE)					
Black	200 m	400 m	200 m	400 m	400 m
Colour	100 m				
RIBBON LIFE (IN MILLION CHARACTERS)					
BLACK RIBBON	2 m	5 m	2 m	2 m	10 m
COLOUR RIBBON					
Black	1 m				
Cyan	0.7 m				
Magenta	0.7 m				
Yellow	0.5 m				

24-pin

*1) requires additional convertible tractor unit option

*2) requires two additional convertible tractor unit options

*3) 150 sheet cut sheet feeder must be fitted first

*4) front feed only

*5) can be used in conjunction with front continuous paper feeding

	LQ-2090	LQ-2180	DLQ-3500	PLQ20/20M	PLQ20D/20DM
CARRIAGE WIDTH IN COLUMNS	136	136	136	94	94
PRINT SPEEDS	10 cpi 12 cpi	10 cpi 12 cpi	10 cpi 12 cpi	10 cpi 12 cpi	10cpi 12cpi
High speed draft	440 529	480 n/a	550 n/a	480 576	480 576
Draft	330 396	360 431	495 594	360 432	360 432
Letter quality	110 132	120 143	165 198	120 144	120 144
EMULATIONS					
Epson	ESC/P2	ESC/P2	ESC/P2	ESC/P2	ESC/P2
IBM / OLIVETTI	IBM PPDS	2391 Plus	ProPrinter 2391+ ProPrinter DS	IBM PPDS/PR2	IBM PPDS/PR2 IBM4722FP / WNI4915+
PAPER HANDLING FEATURES					
Auto paper loading	■	■	■		
Auto and manual tear off position	■	■	■		
Paper parking – continuous stationery	■	■	■		
Micro feed	■	■	■		
Automatic platen gap adjustment				■	■
CUT SHEET STATIONERY					
Single sheet, paper, labels or envelopes	■	■	■	■	■
Multi-part forms (original + copies)	1+4	1+5	1+7	1+6	1+6
Sheets with varying thickness			■	■	■
Multipart with overlap			■	■	■
Front in front out			■	■	■
Front in rear out				■	■
Front in top out	■	■			
Top in top out	■	■			
50 sheet cut sheet feeder	□	□ *3			
150 sheet cut sheet feeder	□				
250 sheet cut sheet feeder			□		
Combined 50/150 sheet cut sheet feeders	□	□ *3			
Front paper guide	□ *5	■ *5			
Front sheet guide	■ *6		■		
Automatic sheet alignment unit			□		
ROLL PAPER	□	□		□	□
CONTINUOUS STATIONERY					
Single sheet or labels	■	■	■	■	■
Multi-part (original + copies)	1+4	1+5	1+7	■	■
Sheets with varying thickness			■	■	■
Multipart with overlap			■	■	■
Rear in front out – push feed			■		
Rear in top out – push feed	■	■			
Rear in top out – pull feed	■	■			
Rear in top out – push and pull feed	□ *1	■			
Front in top out – push feed	■	■			
Front in top out – pull feed	■	■			
Front in top out – push and pull feed	□ *1	□ *1			
Bottom in top out – pull feed	■	■			
Two stationery types loaded at once	□ *1				
BUFFER	128 KB	64 KB	128 KB	64 KB	64 KB
ACOUSTIC NOISE LEVEL	50 dB(A)	54 dB(A)	59 dB(A)	53 dB(A)	53 dB(A)
COLOUR PRINTING			■		
FONTS					
Epson Draft	■	■	■	■	■
Epson Courier	■	■	■		
Epson OCR-B	■	■	■	■	■
Epson Orator	■	■	■		
Epson Orator-S	■	■	■		
Epson Prestige	■	■	■		
Epson Roman	■ S	■ S	■ S		■
Epson Roman T	■ S	■ S	■ S		
Epson Sans Serif	■ S	■ S	■ S	■	■
Epson Sans Serif H	■ S	■ S	■ S		
Epson Script	■	■	■		
Epson Script C	■	■	■		
BARCODE FONTS					
Code 128	■	■	■		
Code 39	■	■	■	■	■
EAN-13	■	■	■	■	■
EAN-8	■	■	■	■	■
Interleave 2 of 5	■	■	■	■	■
PostNet	■	■	■	■	■
UPC-A	■	■	■	■	■
UPC-E	■	■	■	■	■
INTERFACES⁹					
USB	■		■	■	■
Parallel	■	■	■	■	
Serial	□	□	□	■	■ Dual
Network print server	□	□	□		
802.11b/g wireless	□		□	□	□
Type B space	■	■	■		
DIMENSIONS IN MILLIMETRES					
Width	612.5 mm	639 mm	660 mm	384 mm	384 mm
Depth	374.5 mm	402 mm	432 mm	280 mm	280 mm
Height	171.5 mm	268 mm	276 mm	203 mm	203 mm
WEIGHT	9.5 kg	13 kg	18.1 kg	7.7/8.7 kg	7.7/8.7 kg
MTBF (POWER ON HOURS)	20,000	10,000	10,000	10,000	10,000
PRINT HEAD LIFE (MILLION STROKES PER WIRE)					
Black	400 m	400 m	400 m	400 m	400 m
Colour					
RIBBON LIFE (IN MILLION CHARACTERS)					
BLACK RIBBON	8 m	8 m	6 m or 9 m	5 m	5 m
COLOUR RIBBON					
Black			1.5 m		
Cyan			1.1 m		
Magenta			1.1 m		
Yellow			0.8 m		

24-pin

*6) cannot be used in conjunction with front continuous paper feeding
*7) LQ-680Pro only

*8) Multipart 1+6 copies when using pull feed

*9) Not available in all countries.
Please contact your local Epson representative.

OPTIONS, ACCESSORIES AND SUPPLIES

9-pin	OPTIONAL PAPER HANDLING	Order code	LX-300+II	LX-1170II	FX-890	FX-2190	DFX-9000
	Colour upgrade kit	C12C832082	●				
	Convertible tractor unit	C12C800202			●		
		C12C800212				●	
		C12C800302	●				
		C12C800341		●			
	Pull tractor unit	C12C800382					●
	Roll paper holder	C12C811141	●	●	●	●	
	Front paper guide	C12C814022			● *2		
		C12C814032				● *2	
Front sheet guide	C12C814001			● *3			
	C12C814011				● *3		
50 sheet cut sheet feeder	C12C806372	●		●			
	C12C806392		●		●		
150 sheet cut sheet feeder	C12C806382			●			
	C12C806402				●		
Perforation cutter	C12C815072					●	
SUPPLIES							
Black fabric ribbon		C13S015019	C13S015020	C13S015329	C13S015327	C13S015384	
Colour fabric ribbon		C13S015073					
OPTIONAL INTERFACES*4							
Serial interface (OK buffer)	C12C824432			●	●	●	
Epsonnet 10/100 Base Tx Int. Printer Server 5e	C12C824352			●	●	●	
Epson 802.11b/g Wireless and 10/100 Base TX External Print Server	C12C824372 (220 V)	●	●	●	●	●	
	C12C824373 (240 V)						
WARRANTY*4							
1 year replacement or repair		●	●	●	●		
1 year on-site						●	
Optional extension to 3 years		ECPGRP10	ECPGRP20	ECPGRP20	ECPGRP25	ECPGRP70	

24-pin	OPTIONAL PAPER HANDLING	Order code	LQ-300+II	LQ-590	LQ-630	LQ-680/Pro	LQ-690	LQ-2090	LQ-2180	DLQ-3500	PLQ-20/M/D/DM
	Colour upgrade kit	C12C832112	●								
	Convertible tractor unit	C12C800202		●							
		C12C800212						●			
		C12C800302	●								
		C12C800322							●		
	Roll paper holder	C12C811141	●	●		●	●	●	●		●
	Front sheet guide	C12C814011						●			
	Front paper guide	C12C814022		●							
	50 sheet cut sheet feeder	C12C806372	●	●							
C12C806392							●				
C12C806742									*1 ●		
C12C806792					*1 ●						
150 sheet cut sheet feeder	C12C806382		●								
	C12C806402						●				
	C12C806732							●			
	C12C806872				●						
250 sheet cut sheet feeder	C12C806832								●		
Space saving kit	C12C802202									●	
Automatic sheet alignment unit	C12C806882								●		
SUPPLIES											
Black fabric ribbon		C13S015021	C13S015337	C13S015307	C13S015262	C13S015610	C13S015336	C13S015086	C13S015066	C13S015339	
Colour fabric ribbon		C13S015077							C13S015067		
Black film ribbon	C13S015255	●			●						
OPTIONAL INTERFACES*4											
Serial interface (OK buffer)	C12C824432		●		●		●	●	●		
EpsonNet 10/100 Base Tx int. Print Server 5e	C12C824352		●		●		●	●	●		
Epson 802.11b/g Wireless and 10/100 Base TX External PRINT Server	C12C824372 (220 V)	●	●	●		●	●		●	●	
	C12C824373 (240 V)										
WARRANTY*4											
1 year replacement or repair		●	●	●	●	●	●	●	●	●	
1 year On-site								●	●		
Extension to 3 years		ECPGRP10	ECPGRP20	ECPGRP20	ECPGRP20	ECPGRP20	ECPGRP30	ECPGRP30	ECPGRP50	ECPGRP20	

*1) 150 sheet cut sheet feeder must be fitted first

*2) can be used in conjunction with front continuous paper feeding

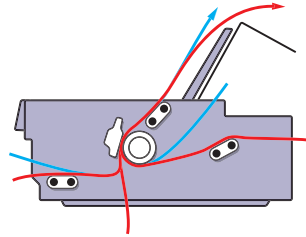
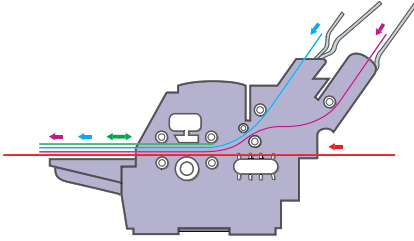
*3) cannot be used in conjunction with front continuous paper feeding

*4) Not available in all countries.

Please contact your local Epson representative.

OPTIONS AND ACCESSORIES

TYPICAL PAPER PATHS



DFX-9000 CABINET
7102677

MOTORISED SHEET FEEDERS

For high volume cut sheet printing, optional motorised cut sheet feeders are available for selected products, like the 150 sheet cut sheet feeder for the Epson LQ-2180. Equipped with productivity enhancing, independent motor drives, these feeders reduce paper handling time and ensure optimum paper throughput.

CUT SHEET FEEDERS

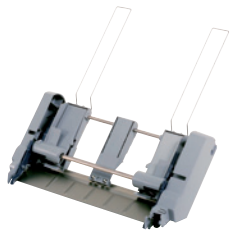
Offering 50, 150 and 250 sheet, for automatic selection of forms and plain stationery.

PAPER FEED TRACTORS

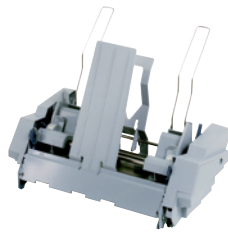
A choice of push, pull, and push/pull combined tractors not only enable more than one stationery type to be permanently loaded for delivery on demand, but handle continuous and multi-part stationery more efficiently.



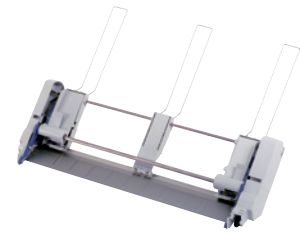
DFX-9000 TRACTOR UNIT
C12C800382



LQ-/SQ-870/LQ-570 SINGLE CSF
C12C806372



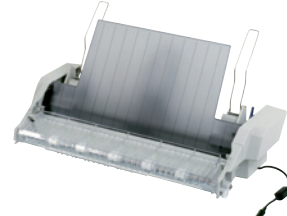
LQ-570 HIGH CAPACITY CSF
C12C806382



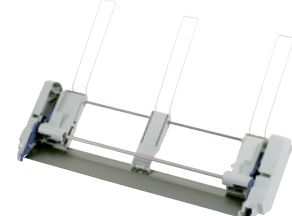
FX-1180/1170/SQ-1170/LX-1170 CSF
C12C806392



LQ-1170 HIGH CAPACITY CSF
C12C806402



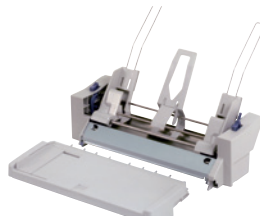
FX-/LQ-2170 HIGH CAPACITY CSF
C12C806732



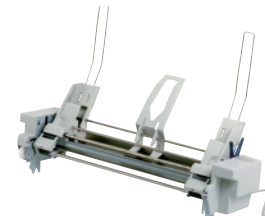
FX-/LQ-2170 SECOND-BIN CSF
C12C806742



LQ-670 SECOND-BIN CSF
C12C806792



LQ-680/680PRO HIGH CAPACITY CSF
C12C806872



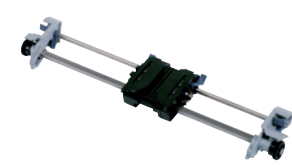
DLQ-3000+/3500 SINGLE-BIN CSF
C12C806832



LX-300 PULL TRACTOR UNIT
C12C800302



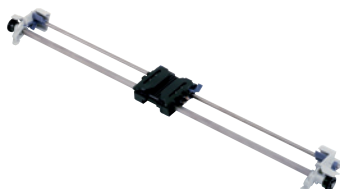
LX-1170 PULL TRACTOR UNIT
C12C800341



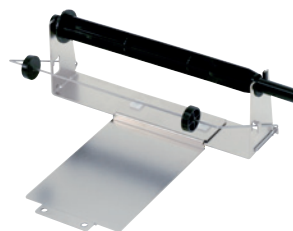
LQ-870 PUSH/PULL TRACTOR UNIT
C12C800202



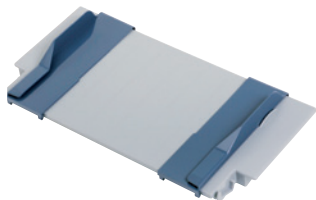
LQ-1170 PUSH/PULL TRACTOR UNIT
C12C800212



FX-/LQ-2170 PULL TRACTOR UNIT
C12C800322



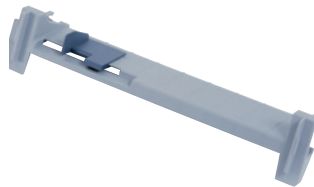
ROLL PAPER HOLDER
C12C811141



LQ-870 FRONT SHEET GUIDE
C12C814001



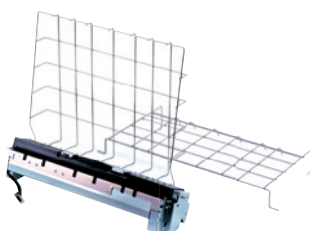
LQ-1170 FRONT SHEET GUIDE
C12C814011



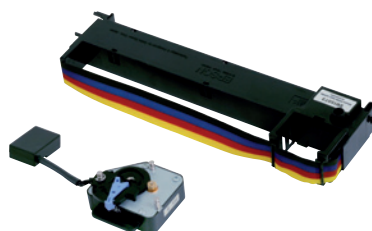
FX-880 FRONT SHEET GUIDE
C12C814022



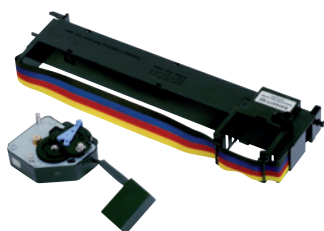
FX-1180 FRONT SHEET GUIDE
C12C814032



DFX-8500 PERFORATION CUTTER
C12C815072



LX-300 COLOUR UPGRADE KIT
C12C832082



LQ-300 COLOUR UPGRADE KIT
C12C832112



AUTOMATIC SHEET ALIGNMENT UNIT
C12C806882



PLQ-20 SPACE SAVING KIT
C12C802202



SERIAL I/F BOARD NO BUFFER TYPE-B
C12C824432



EPSON NET 10/100 BASE TX. INT. PRINT
SERV. 5E
C12C824352



EPSON NET 802.11B/G 10/100 BASE T EXT.
C12C824372



Better Products for a Better Future®

SEIKO EPSON CORPORATION

www.epson-europe.com

All features and specifications described are subject to change without notice. When Epson products are used for applications requiring high reliability/safety such as transportation devices related to aviation, rail, marine, automotive etc.; disaster prevention devices; various safety device etc.; or functional/precision device etc.; you should use the products only after giving consideration to inclusion of fail-safes and redundancies into your design to maintain safety and total system reliability. EPSON and ESC/POS are registered trademarks of Seiko Epson Corporation in the US and other countries. SEAJet is a registered trademark of Seiko Epson Corporation.

The USB-IF Logos are trademarks of Universal Serial Bus Implementers Forum, Inc. Company and product names are trademarks or registered trademarks of their respective companies.

Printed on paper sourced from sustainable and well-managed forests that meet the criteria of national certification schemes endorsed by the PEFC. Paper made from ECF pulp which has been bleached without the use of chlorine gas.

© 2009 SEIKO EPSON CORPORATION. All rights reserved.

